



July 2016

Issue #42

Symposium Series on Burnout Continues in New York



The second part of our *Compassion in Action* symposium series on "Remaining Resilient on the Front Lines of Care," was held at the Sony Club in Manhattan on June 17 in partnership with the Greater New York

Hospital Association. Following a thought-provoking discussion on the rising epidemic of ["clinician burnout" in the face of mass tragedy and trauma](#) in Boston back in April, this event was geared towards the systemic barriers to workplace well-being for health care professionals. [Learn more about the four key findings from the panel](#)

Introducing Our 2016 Dinner Chairs



We hope you'll join this year's dinner chairs at our [21st Annual Kenneth B. Schwartz Compassionate Healthcare Dinner](#) on November 15, 2016.

We're excited to introduce you to a dinner chair in each newsletter issue leading up to the dinner.

Meet Dinner Chair **Dianne Savastano, BSN, MBA**, founder and president of Healthassist, who says she is inspired by the Schwartz Center's mission because, "In the face of all the health care

interactions patients experience, it's easy to forget that we are delivering care to human beings, with individualized sets of emotions and feelings. The responsibility is ours to deliver that care in a way that makes patients feel special, and the Schwartz Center helps us to

Save the Dates!

Compassion in Action Webinar

Tuesday, July 19, 2016
4:00-5:00 PM ET

"When Emotion Fills the Room: How to Use Empathic Statements to Move a Conversation Forward"

REGISTER NOW

Office Hours Webinar

Thursday, Sept. 22, 2016
12:00-1:00 PM ET

"Recognizing Compassionate Caregivers – Why and How"

REGISTER NOW

Schwartz Center members only

Facilitation Workshop

View the [date and details](#) for our 2016 session

REGISTER NOW

Schwartz Center members only

Boston Thought Leadership Breakfast

Friday, Oct. 14, 2016

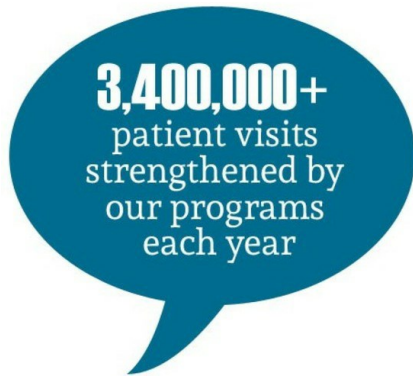
achieve that goal.” [Learn more about the dinner](#)

A Caregiver Story: Giving Care and Caring for the Self



For **Ramita Bonadonna, PhD, APRN-BC**, compassion means recognizing and focusing on the commonalities we have with people, rather than the differences. A psychiatric consultation liaison nurse at the Medical University of South Carolina Hospital, Bonadonna advises caregivers to have a desire to grow as they interact with people. [Learn more](#) about Ramita’s organic approach in listening to and showing care not only to her patients, but also to herself.

Support the National Spread of the Schwartz Center



Did you know that millions of patient visits have been strengthened by caregivers’ participation in our programs? [Make a gift](#) today to ensure all patients receive compassionate care and all caregivers are supported in providing it.

June’s Top Facebook Posts



Here are the top three [Facebook](#) posts that resonated most with our followers last month:

1. [Compassion fatigue hits front-line health care workers](#)
2. [Five Times Nurses Made Their Patients Forget They Were In A Hospital](#)
3. [Is Compassion Missing From the Medical Curriculum?](#)

7:30-10:00 AM ET

Mandarin Oriental Hotel
776 Boylston St.
Boston, MA

[REGISTER NOW](#)

Annual Kenneth B. Schwartz Compassionate Healthcare Dinner

Tuesday, Nov. 15, 2016

Boston Convention &
Exhibition Center
415 Summer St.
Boston, MA

[REGISTER NOW](#)

Join Our Team!

We’re seeking talented candidates to fill the following roles at the Schwartz Center:

- Member Experience Coordinator
- Communications Intern - Fall 2016
- Development Intern - Fall 2016
- Finance Intern – Fall 2016

[Learn more](#) about these opportunities!

Your Gift Counts

Help support our programs in compassionate health care!

[DONATE](#)

Connect With Us



We Want Your Feedback

Help support our programs in compassionate health care!

[EMAIL US](#)

The Schwartz Center | 100 Cambridge St. | Ste. 2100 | Boston | MA | 02114

Share this email:



[Manage](#) your preferences | [Opt out](#) using TrueRemove™

Got this as a forward? [Sign up](#) to receive our future emails.

View this email [online](#).

100 Cambridge Street, Suite 2100
Boston, MA | 02114 US

This email was sent to .
To continue receiving our emails, add us to your address book.

