



Upcoming Educational Programs and Events

For valued Schwartz Center members

Corman IMPACT Honors Recipients and Honorable Mentions



The Corman IMPACT Honors celebrates Schwartz Center healthcare members who are making a transformational impact by creating programs or initiatives that promote compassionate, collaborative care within their organization or system.

Thank you to each of the organizations who submitted a program or initiative for this year's recognition. We are thrilled to share the three selected exemplary programs:

- Transition Support Program, Advocate Illinois Masonic Medical Center
- The Center for Resiliency, Dell Children's Medical Center
- Oregon Burn Center, Legacy Emanuel Medical Center

Watch our Chief Medical Officer Beth Lown, MD, discuss the programs and the impact they are making with a representative from each Schwartz Center member site.

We are grateful to have such an inspiring member community! Visit our site to watch the conversations and read more about the honorable mentions.

Watch Now

Thought Leadership Conversation: What Has the Pandemic Revealed About Health Equity and Where Do We Go from Here?



Schwartz Center CEO Matt Herndon recently hosted a special virtual panel discussion of the impact of the COVID-19 pandemic on health equity in the United States. Our panel of experts discussed how COVID-19 reinforced longstanding inequities in our healthcare system, as well as how healthcare leaders can work together to protect the health and well-being of all Americans.

In case you missed it, the recording is now available on the Schwartz Center website.

Watch Now

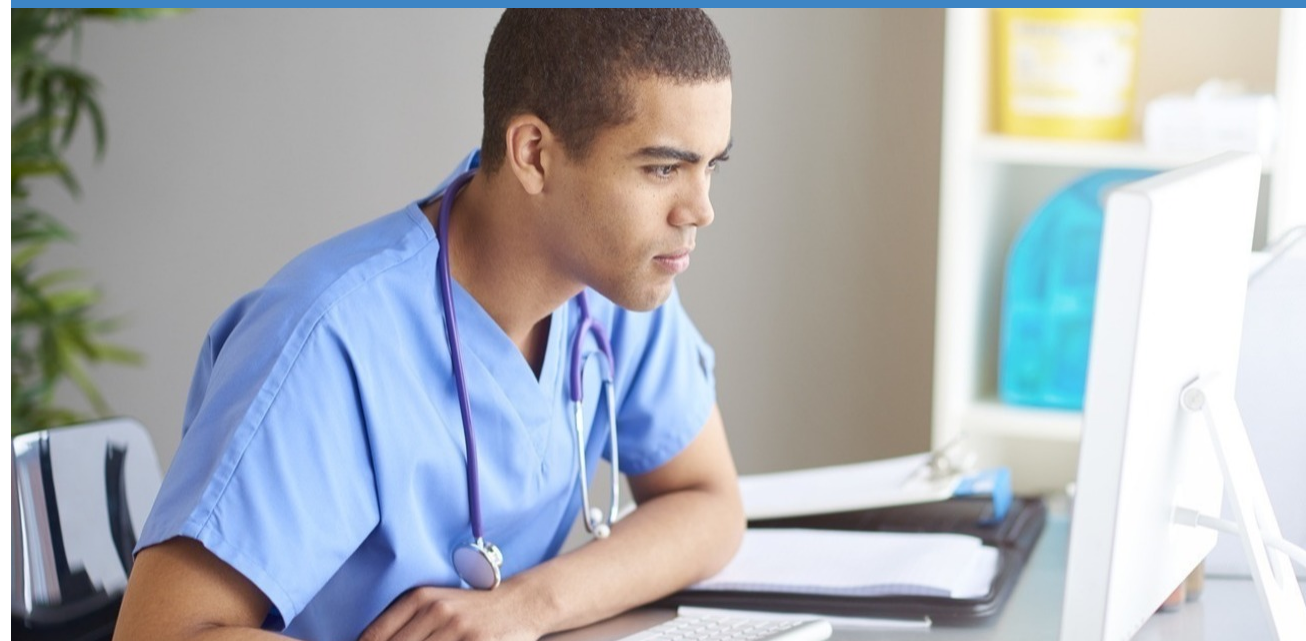
25th Annual Kenneth B. Schwartz Compassionate Healthcare Dinner



The 25th Annual Kenneth B. Schwartz Compassionate Healthcare Dinner will take place virtually on Dec. 3, 2020, and will Honor a Nation of Compassionate Caregivers in recognition of the extraordinary efforts and compassion demonstrated by healthcare workers across the country during the COVID-19 pandemic. Keynote address will be delivered by Ashish K. Jha, MD, MPH, dean of the School of Public Health at Brown University.

Learn More and Register

Stress First Aid Program



We recently launched our newest member benefit, the Stress First Aid (SFA) program. SFA offers a set of supportive actions that promote self-care and peer support, enabling staff to identify and mitigate the negative impacts of stress at work before they impair staff health and well-being. The SFA model is based on five evidence-informed factors that help people recover from stress and adversity: the need for safety, calm, connection, a sense of competence or self-efficacy, and hope.

SFA is available free of charge as a benefit of your organization's Schwartz Center membership.

Visit the SFA page to learn more about the one-hour self-paced training and our more intensive Train-the-Trainer opportunity.

Learn More

Schwartz Rounds® Training and Education Schedule



The Schwartz Center membership team offers several monthly training sessions for Schwartz Rounds leaders. Each one gives you an opportunity to learn or refine skills for your Schwartz Rounds programs. Training sessions include Virtual Schwartz Rounds, Unit-Based Schwartz Rounds, and Trauma-Informed Facilitation Skills.

We encourage you to explore the page and take advantage of our robust training opportunities. If you'd like guidance on which training would be most beneficial for you or your team, please contact your Member Experience Advisor.

Learn More and Register

Member Support

As part of your membership, we have staff dedicated to providing ongoing support and guidance for your team. If you have questions or would like to discuss your Schwartz Rounds program or any of the offerings highlighted in this newsletter, please reach out to your designated Schwartz Center staff person.

Stephanie Adler Yuan, MS, Director of Programs

Casey Kudesia, Member Experience Advisor

Kathy Scopin, BSN, PHN, RN, Member Experience Advisor

New Schwartz Center Healthcare Members

Welcome to the Schwartz Center Healthcare Member Community! Thank you for making the commitment to compassionate healthcare.

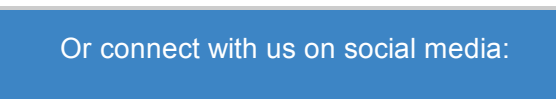
New Members:

- Norwalk Hospital, CT
- Health + Hospitals/Bellevue Hospital, NY
- Samaritan Albany General Hospital, OR

Organization Code

If you are in need of your organization code to register for the Member Community website or to register for one of our programs, please contact Jennifer Rossman at jrossman@theschwartzcenter.org.

Or connect with us on social media:

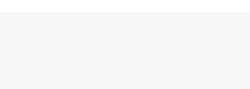


Questions?

For all membership questions, please email membership@theschwartzcenter.org.

EMAIL US

Share this email:



Manage your preferences | Opt out using TrueRemove™
Got this as a referral? Sign up to receive our future emails.
View this email online.

100 Cambridge Street, Suite 2100
Boston, MA | 02114 US

This email was sent to .
To continue receiving our emails, add us to your address book.

