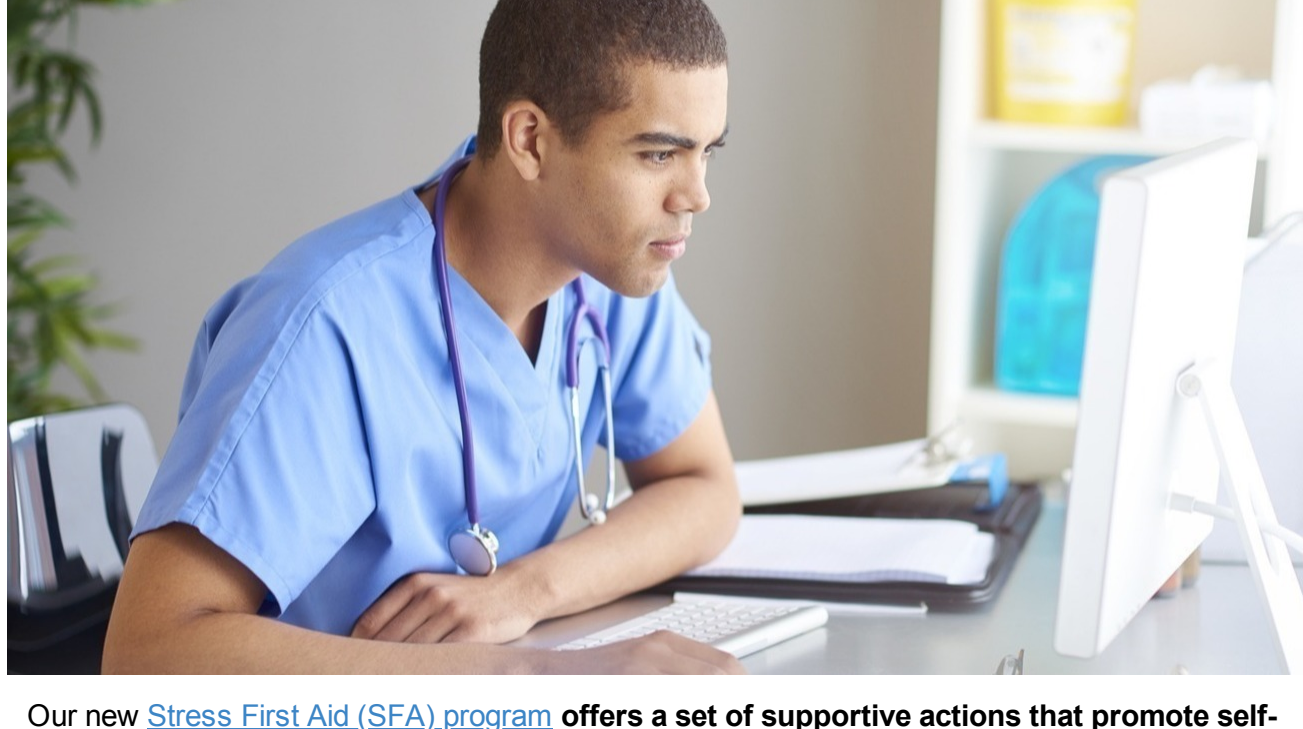




Upcoming Educational Programs and Events

For valued Schwartz Center members

Stress First Aid Program



Our new [Stress First Aid \(SFA\) program](#) offers a set of supportive actions that promote self-care and peer support, enabling teams to identify and mitigate the negative impacts of stress at work before they impair staff health and wellbeing. This program can be accessed by all staff at your organization.

SFA is available free of charge as a benefit of your organization's Schwartz Center membership.

If you are interested in learning more about the Stress First Aid program, please [join us for an information session on December 7 at 4:00 p.m. EST](#). The webinar will provide an overview of the program, the two training models and required staffing and resources for the Train the Trainer option and SFA implementation.

[Learn More and Register](#)

Corman IMPACT Honorees



CORMAN IMPACT HONORS

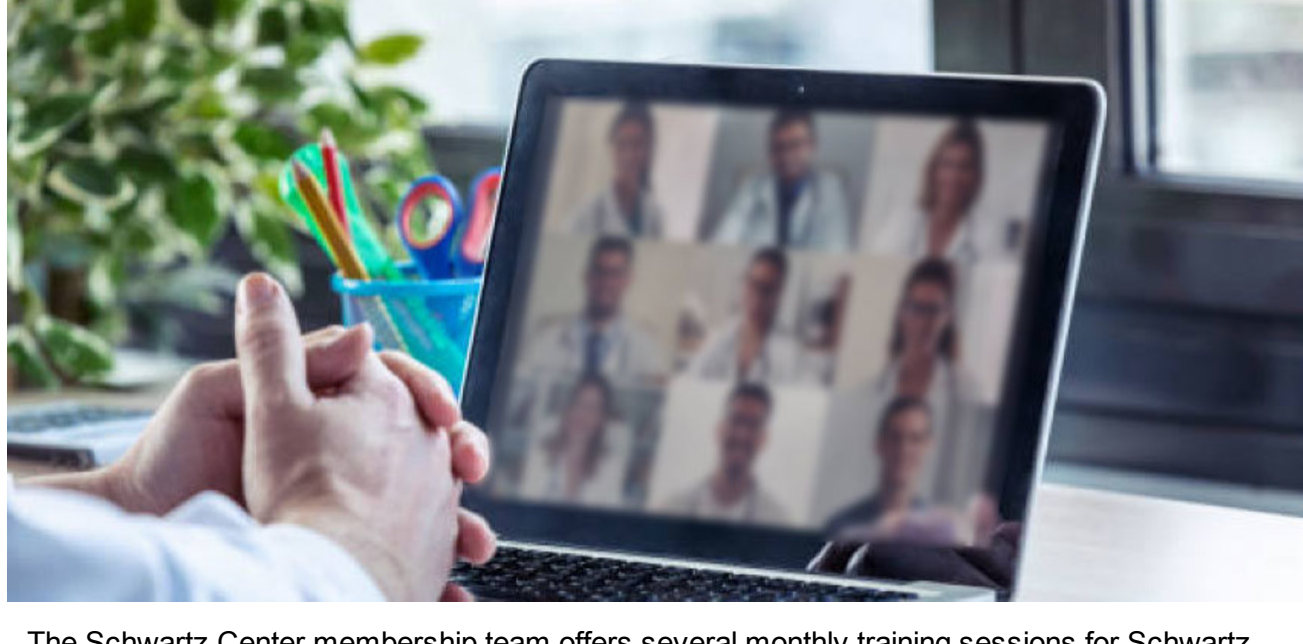
[Hear](#) our Chief Medical Officer Beth Lown, MD, discuss the transformational impact that this year's Corman IMPACT Honorees are making in their organizations and their communities through programs that promote compassionate, collaborative care.

This year's three selected exemplary programs are:

- Transition Support Program, Advocate Illinois Masonic Medical Center
- The Center for Resiliency, Dell Children's Medical Center
- Oregon Burn Center, Legacy Emanuel Medical Center

[Watch Now](#)

Schwartz Rounds® Training and Education Schedule



The Schwartz Center membership team offers several monthly training sessions for Schwartz Rounds leaders. Each one gives you an opportunity to learn or refine skills for your Schwartz Rounds programs. [Training sessions](#) include **Virtual Schwartz Rounds, Unit-Based Schwartz Rounds, and Trauma-Informed Facilitation Skills**.

[Explore the page](#) and take advantage of our robust training opportunities. If you'd like guidance on which training would be most beneficial for you or your team, please contact your Member Experience Advisor.

[Learn More and Register](#)

Schwartz Rounds Equity Impact Assessment Tool (EIAT)

The [Schwartz Rounds Equity Impact Assessment Tool \(EIAT\)](#) is an internal planning tool to help your Schwartz Rounds Planning Committee convene a conversation about the best ways to center experiences related to racism and racial trauma in the context of your Schwartz Rounds program, and how to include key stakeholders in that conversation.

We hope this resource will help you assess how and whether your Schwartz Rounds program (and other organizational initiatives) can help shape your approach to addressing topics related to diversity, equity, and inclusion.

Please note that this tool is for your internal use and does not need to be returned to us. If you have any questions, please feel free to contact your Member Experience Advisor.

[Download EIAT](#)

Member Support

As part of your membership, we have staff dedicated to providing ongoing support and guidance for your team. If you have questions or would like to discuss your Schwartz Rounds program or any of the offerings highlighted in this newsletter, please reach out to your designated Schwartz Center staff person.

[Stephanie Adler Yuan, MS, Director of Programs](#)

[Casey Kudesia, Member Experience Advisor](#)

[Kathy Scopin, BSN, PHN, RN, Member Experience Advisor](#)

New Schwartz Center Healthcare Members

Welcome to the Schwartz Center Healthcare Member Community! Thank you for making the commitment to compassionate healthcare.

New Members:

- Adventist Health Castle, HI
- Blue Cross Blue Shield of Massachusetts - Health & Medical Management, MA
- Cheshire Medical Center, NH
- Mather Hospital, NY
- New Jersey Nursing Initiative, NJ
- White Plains Hospital, NY
- Zucker Hillside Hospital, NY

Organization Code

If you are in need of your organization code to register for the Member Community website or to register for one of our programs, please contact Jennifer Rossman at jrossman@theschwartzcenter.org.

Or connect with us on social media:



Questions?

For all membership questions, please email membership@theschwartzcenter.org.

[EMAIL US](#)

Share this email:



[Manage](#) your preferences | [Opt out](#) using TrueRemove™
Got this as a forward? [Sign up](#) to receive our future emails.

View this email [online](#).

100 Cambridge Street, Suite 2100
Boston, MA | 02114 US

This email was sent to .
To continue receiving our emails, add us to your address book.

