



Upcoming Educational Programs and Events

For valued Schwartz Center members

Schwartz Center Member Learning Center



We recently launched our new online home for member training and education, the [Schwartz Center Member Learning Center](#). The courses are self-paced, allowing you to take courses when it is most convenient for you.

We've launched three new courses this month: **Introduction to Trauma-Informed Facilitation Skills**, **Introduction to Unit-Based Schwartz Rounds**, and **Introduction to Virtual Schwartz Rounds**.

Courses are included in your membership and are available to all staff at Schwartz Center member organizations. For more information about each course including learning objectives, intended audience, time commitment and how to register, visit our [Member Community website](#).

[Learn More](#)

Community Connections



[Community Connections](#) is a place for Schwartz Center members around the world to connect with each other and with Schwartz Center staff about the work you do to advance compassion. By forging connections across our member community, we learn together and support our shared mission: to ensure compassion for all who give and receive care.

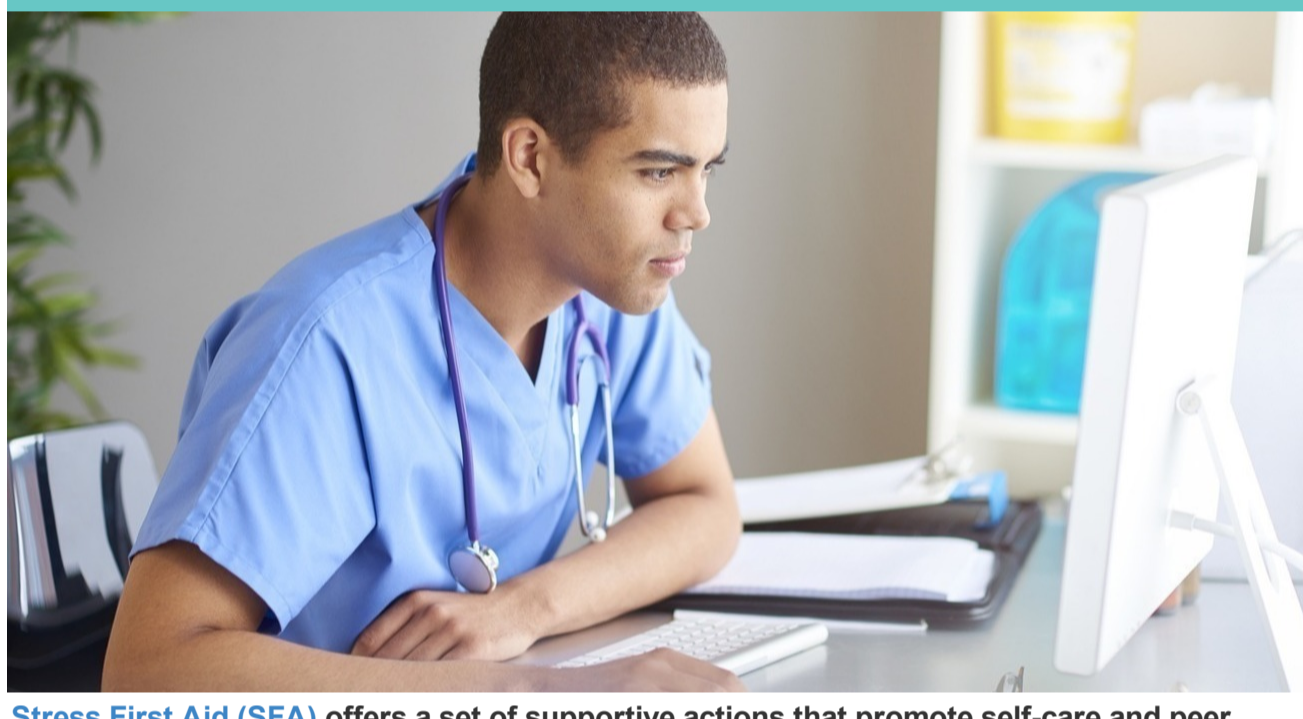
Bring your **creativity, curiosity, questions, and challenges** to these dynamic hour-long conversations with Schwartz Center members and staff. We'll talk about what it means to champion and implement Schwartz Center programs among different populations and settings, and how we can inspire and learn from one another.

Check out our spring calendar of Community Connections with topics including: Best Practices for Virtual Schwartz Rounds, Stress First Aid, Facilitating Inclusive Schwartz Rounds and Schwartz Rounds at Children's Hospitals. And don't miss this week's session:

Community Connections: Op-Ed Writing Workshop
Wednesday, February 24, 2021
3:00 – 4:00 p.m. ET

[Learn More and Register](#)

Stress First Aid Informational Webinar



[Stress First Aid \(SFA\)](#) offers a set of supportive actions that promote self-care and peer support, enabling teams to identify and mitigate the negative impacts of stress at work before they impair staff health and well-being. **This program can be accessed by all staff at your organization.**

SFA is available free of charge as a benefit of your organization's Schwartz Center membership.

If you are interested in learning more about the Stress First Aid program, please [join us for an information session on March 16 at 4:00 p.m. EST](#). The webinar will provide an overview of the program, the two training models and required staffing and resources for the Train the Trainer option and SFA implementation.

[Register Now](#)

Join a Study of Healthcare Professional Well-Being



It's more important than ever to understand how the turmoil of the COVID-19 pandemic and other stressors are affecting those of us who work in healthcare. The Schwartz Center has collaborated with a research team at the Harvard TH Chan School of Public Health to develop a [survey of healthcare professional mental health and well-being](#). Your input will help us and the broader healthcare community best support you and your colleagues now and in the eventual wake of the pandemic.

[Take the Survey](#)

Member Support

As part of your membership, we have staff dedicated to providing ongoing support and guidance for your team. If you have questions or would like to discuss your Schwartz Rounds program or any of the offerings highlighted in this newsletter, please reach out to your designated Schwartz Center staff person.

- [Stephanie Adler Yuan, MS, Director of Programs](#)
- [Casey Kudesia, Member Experience Advisor](#)
- [Kathy Scopin, BSN, PHN, RN, Member Experience Advisor](#)

New Schwartz Center Healthcare Members

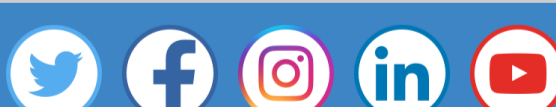
Welcome to the Schwartz Center Healthcare Member Community! Thank you for making the commitment to compassionate healthcare.

New Members:

- Dorothy Ley Hospice, ON
- Kaiser Permanente Panorama City Medical Center, CA
- Kaiser Permanente Riverside Service Area, CA
- New York - Presbyterian Brooklyn Methodist Hospital, NY
- Sutter Roseville Medical Center, CA
- Wake Forest Baptist Medical Center, NC

Organization Code

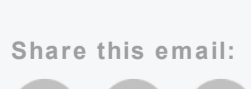
If you are in need of your organization code to register for the Member Community website or to register for one of our programs, please contact Jennifer Fiske at jfiske@theschwartzcenter.org.



[EMAIL US](#)

The Schwartz Center For Compassionate Healthcare
617-724-4746 | theschwartzcenter.org | membership@theschwartzcenter.org

Share this email:



[Manage](#) your preferences | [Opt out](#) using TrueRemove™
Got this as a forward? [Sign up](#) to receive our future emails.

View this email [online](#).

100 Cambridge Street, Suite 2100
Boston, MA | 02114 US

This email was sent to .

To continue receiving our emails, add us to your address book.

emma

[Subscribe](#) to our email list.